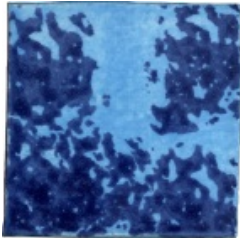
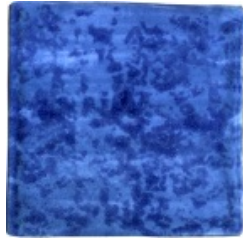


# GUIDO KRATZ KERAMIK

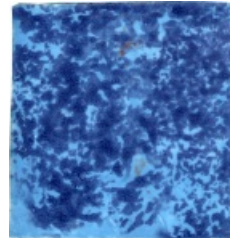
## Keramik-Pflastersteine zweifarbig



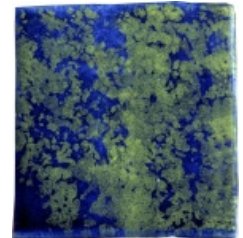
hellblau-dunkelblau



mittelblau-dunkelblau



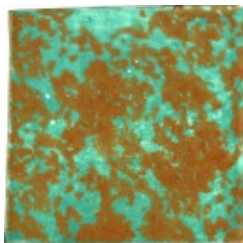
türkis-dunkelblau



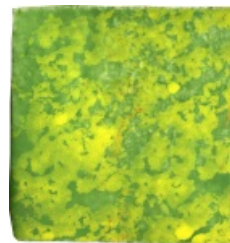
dunkelblau-gelb



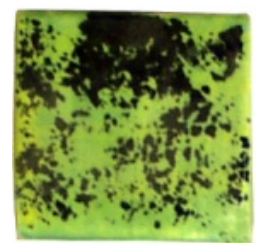
hellblau-rot



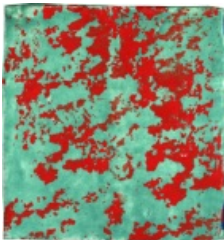
dunkelgrün-orange



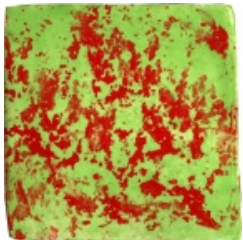
hellgrün-gelb



gelbgrün-dunkelblau



blaugrün-rot



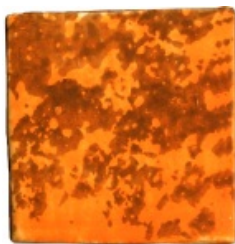
gelbgrün-rot



maisgelb-braun



gelb-maisgelb



orange-braun



rot-dunkelblau



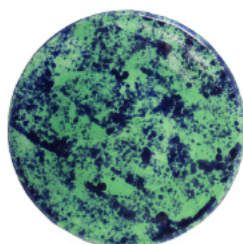
orange-rot



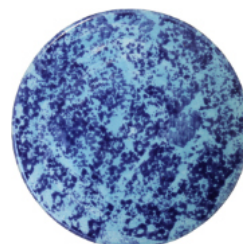
rosa-rot



rot-dunkelblau



grün-dunkelblau



hellblau-dunkelblau



orange-gelb